

Company Profile

Since 2003

AL AWSAF

General Contracting
& Maintenance Est.





1 Overview

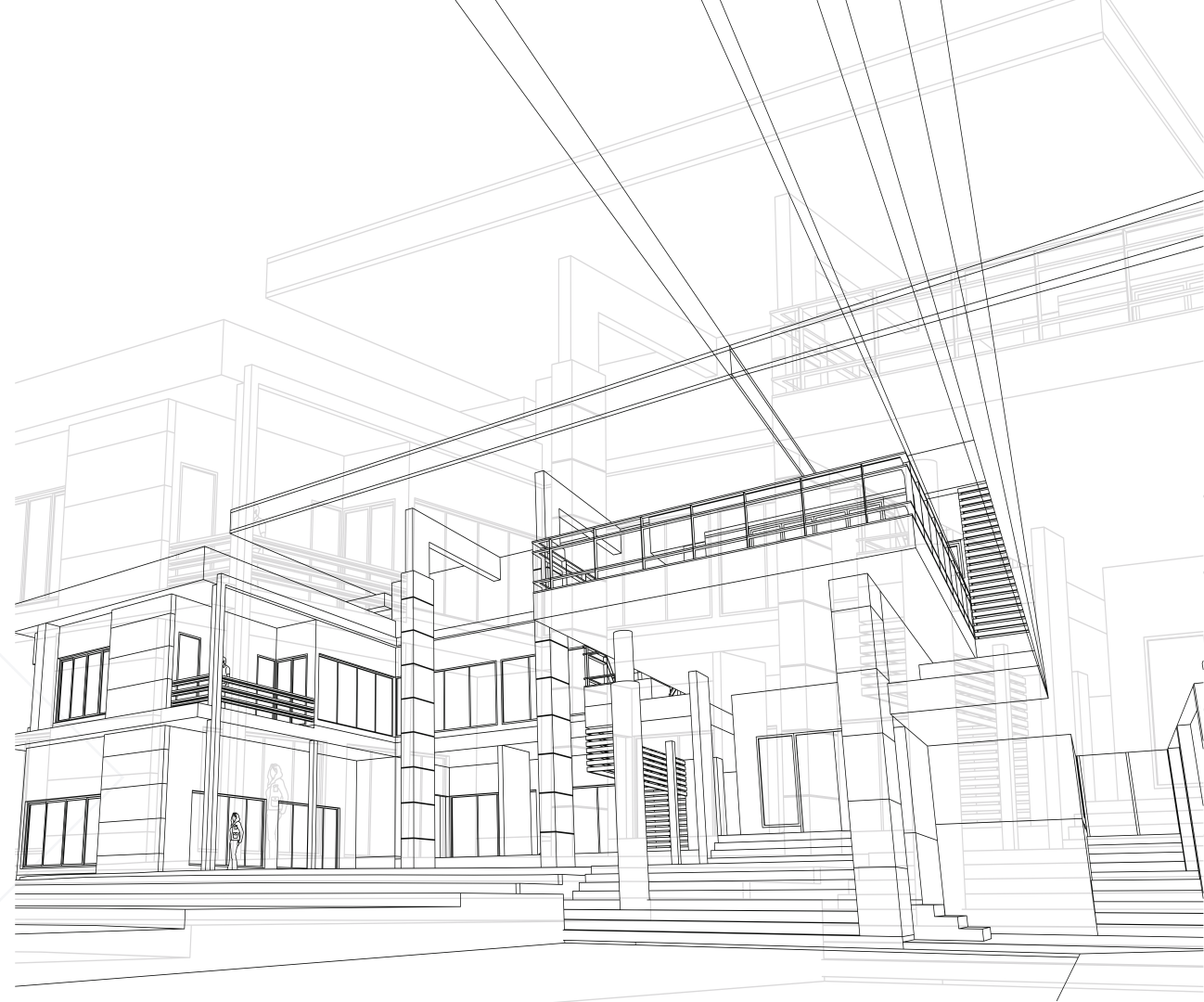
Overview

1.1 Background

Al Awsaf Contracting Establishment provides services of construction, building, project management and general maintenance since 2003.

Since then, efforts have been focused on establishing several high-quality and efficient projects through an integrated engineering, technical and management team.

We have gained our experience over the years from establishing many private and government projects including executive offices, residential villas, commercial buildings, palaces, compounds and many other projects.



We also have an integrated team of skilled manpower and modern construction equipment while ensuring safety in the first place.

Our success is measured by agent satisfaction and the quality of the projects we have completed.

1.2 Our Mission

Keeping up with the latest technologies in the construction industry at the national and regional level, including the use of the latest equipment, apparatus and mechanisms, which ensure providing the best service and continuing to raise the level of performance of all employees in the establishment.

1.4 Our Goals


- Enhancing our skills and expanding our services in the enterprise and construction sector to meet the changing needs of agents.
- Promoting a culture of high quality and demonstrating continuous progress in everything we do, while adhering to excellence and upholding the highest standards of quality.


1.3 Our Vision

To be the first choice for agents in providing services of construction, contracting and project management.


Why **Al Awsaf**

 **Integrated construction services :** Because we are keen to focus our attention on the details of the project, from the work of the surveying and the identification of the levels, through the excavation, construction, architectural and electrotechnical work until the completion of the implementation and delivering the project to the agent.

 **Working team :** There is an integrated working team with high scientific and practical experience that has contributed to the implementation of a number of projects: These include commercial, educational and investment buildings and private residential villas.

 **Engineering management :** Our engineers have the ability to provide solutions and studies for the architectural and construction challenges facing client projects, and have the latest technology for site management.

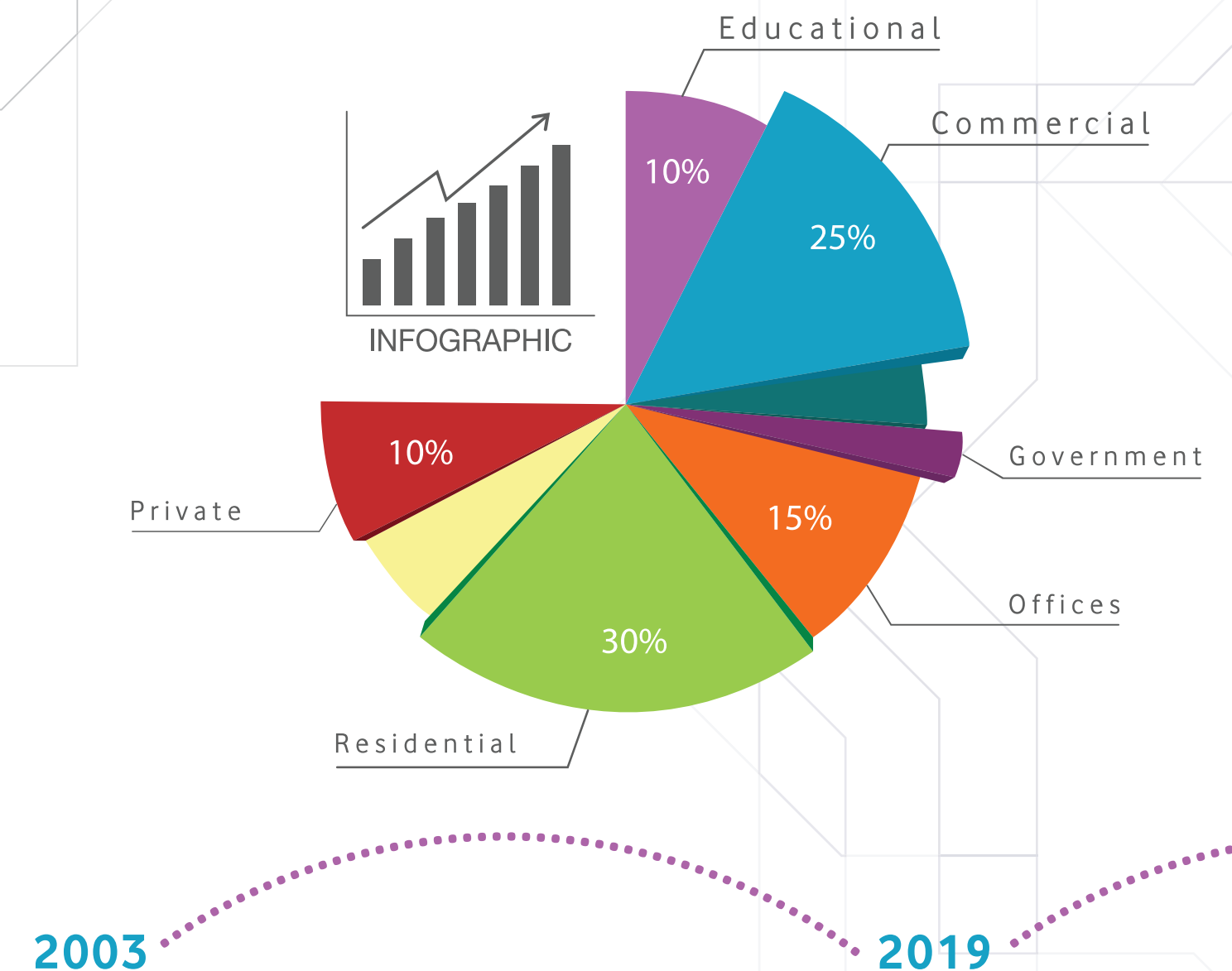
 **Manpower :** Providing specialized technical manpower with expertise in each field, under the management of site engineers.

 **Building materials :** Supply of all building materials produced by major companies and of the finest types of high-quality specifications and standards.

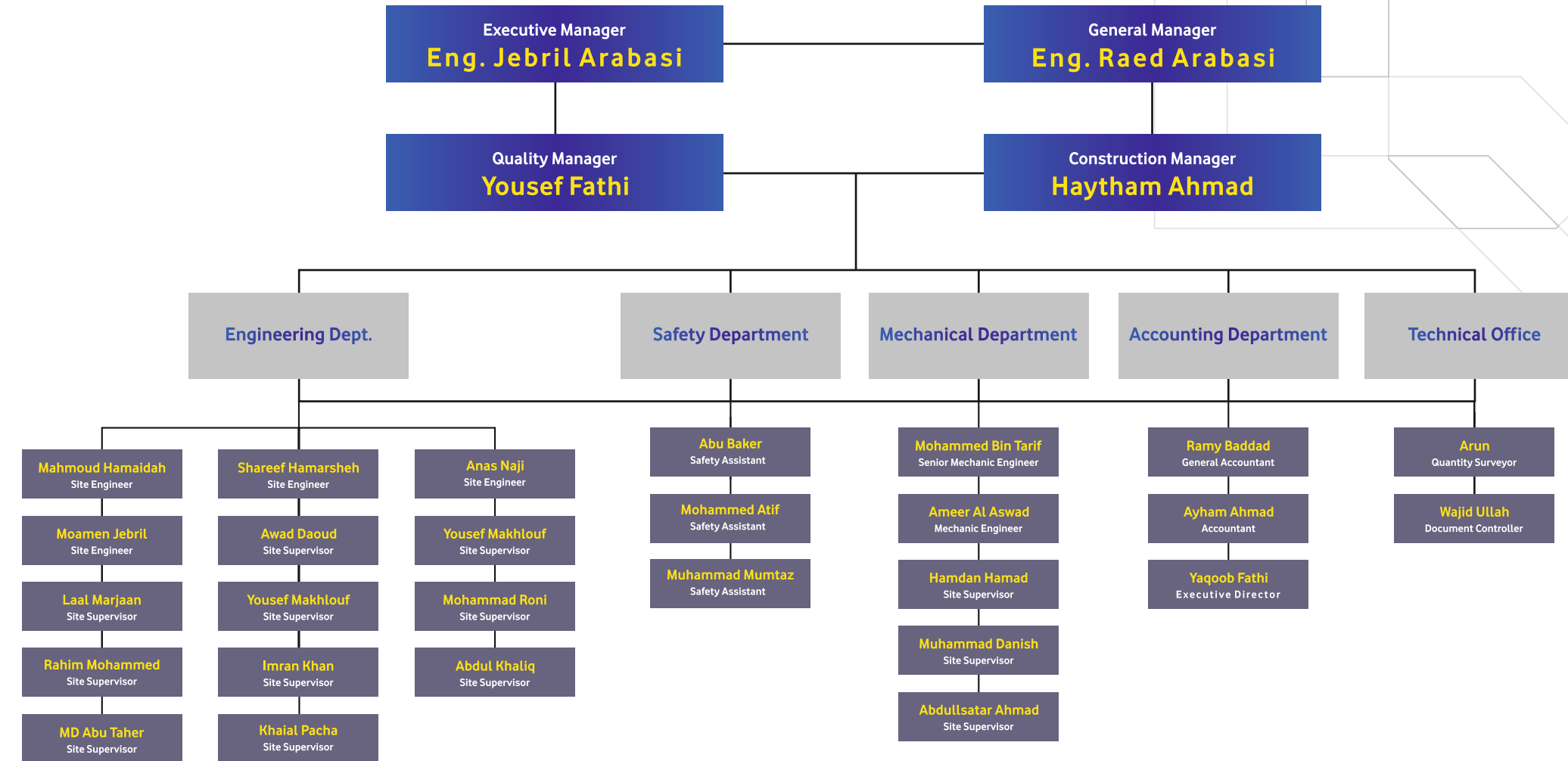
 **Quality management :** To be the first choice for agents in providing services of construction, contracting, general maintenance and project.

Our Projects **Infographics**

Educational
Commercial
Government
Offices
Residential
Private



Organization Structure



Building Your Visions
Creating Reality





2 Our Partners

2.1 Consultants

- Houbara Lab Design - HLD
- Military Works
- Abu Dhabi Police Engineering Department
- Arco Engineering Consulting
- Arcal Engineering Consultant
- Safeer Engineering Consultants
- Shahin Engineering Consultants
- Adnan Saffarini
- Alpha Beta Engineering Consultants
- Granada Engineering Consultants
- Al Hosn Engineering Consultants
- Al Reyadah Engineering Consultants
- Al Bahri Engineering Consultancy

2.2 Clients

- United Arab Emirates University
- Al Ain University of Science and Technology
- Ministry of Defense
- General Directorate of Abu Dhabi Police
- First Gulf Bank
- Emirates Cement Factory
- Department of Municipality and Agriculture
- Abu Dhabi Commercial Engineering Services LLC
- Judicial Department
- Environment Agency
- First Gulf Bricks Factory
- Gulf Air Liquid Factory
- Family Development Foundation
- Work Department of His Highness the Head of State
- Higher Corporation for Specialized Economic Zones



3 SAFETY & QUALITY POLICY

SAFETY POLICY

- Ensure the education, interest and awareness training of new employees in safe working methods before the assumption of duty.
- Ensure that the organization is a safe place, and the Environment, facilities, equipment and substances are subject to safe systems to prevent risks to health or safety.
- Promote personal responsibility and effort on the part of everyone to avoid and prevent health hazards and injuries to themselves and to others who may be affected by their acts or omissions and to co-operate with the organization to comply with its duties, requirements and statutory obligations.
- Ensure the use of defensive driving techniques by car drivers and machinery operators.
- Monitor effectiveness of safety policy.
- Display and publicize this statement and review it at least bi-annually.

QUALITY POLICY

Perfect Teamwork To Provide High Quality Products To Our Valuable Customers As Per Their Requirements On Time, Everytime.

- Usage of the best raw material and on time delivery.
- Quality checking at every stage.
- To cover all safety health and environmental issues.
- Immediate action upon customer complaints.
- Adoption of up to date know how for the enhancement of performance.



3 Our Projects

3.1 International Fund for Houbara Conservation (IFHC)

📍 Al Ain, Sweihan

📐 14,400 M2



3.1 International Fund for Houbara Conservation (IFHC)

📍 Al Ain, Sweihan

📐 14,400 M2



3.2 Al Ain University of Science and Technology

Al Ain, Al Jimi 10,500 M2



3.2 Al Ain University of Science and Technology

Al Ain, Al Jimi 10,500 M2



3.3 Apartments Complex

📍 Al Ain, Mutaredh  3,400 M2



3.3 Apartments Complex

📍 Al Ain, Mutaredh  3,400 M2



3.4 Villas Compound

📍 Al Ain, Mutaredh  6,000 M2



3.4 Villas Compound

📍 Al Ain, Mutaredh  6,000 M2



3.5 Commercial Building

📍 Al Ain, Asharej 3,600 M2



3.6 4 Investment Villas

📍 Al Ain, Al Jimi 10,800 M2



3.5 Investment Villa

📍 Al Ain, Al Ruwaikah 🏗️ 3,600 M2



3.6 Investment Villa

📍 Al Ain, Al Ruwaikah 🏗️ 3,270 M2



3.7 The General Authority of Islamic Affairs and Endowments

📍 Al Ain, Ghireebah

🏗️ 4,000 M2



3.7 The General Authority of Islamic Affairs and Endowments

📍 Al Ain, Ghireebah

🏗️ 4,000 M2



3.8 General Authority of Islamic Affairs and Endowments

📍 Al Ain, Al Neyadat

🏗️ 750 M2



3.8 General Authority of Islamic Affairs and Endowments

📍 Al Ain, Al Neyadat

🏗️ 750 M2



3.10 Private Villa

📍 Al Ain, Al Foa'h

📐 900 M2



3.10 Private Villa

📍 Al Ain, Al Foa'h

📐 900 M2



3.1 1 Private Villa

📍 Al Ain, Al Foa'h 📐 900 M2



3.1 1 Private Villa

📍 Al Ain, Al Foa'h 📐 900 M2





☎ 00971 55 446 1113 ☎ 00971 3 755 4330

✉ info@alawsaf.ae 🌐 www.alawsaf.ae

📍 Al Masood Travels Building, Near ADCB
Clock Tower RA, AlAin, United Arab Emirates